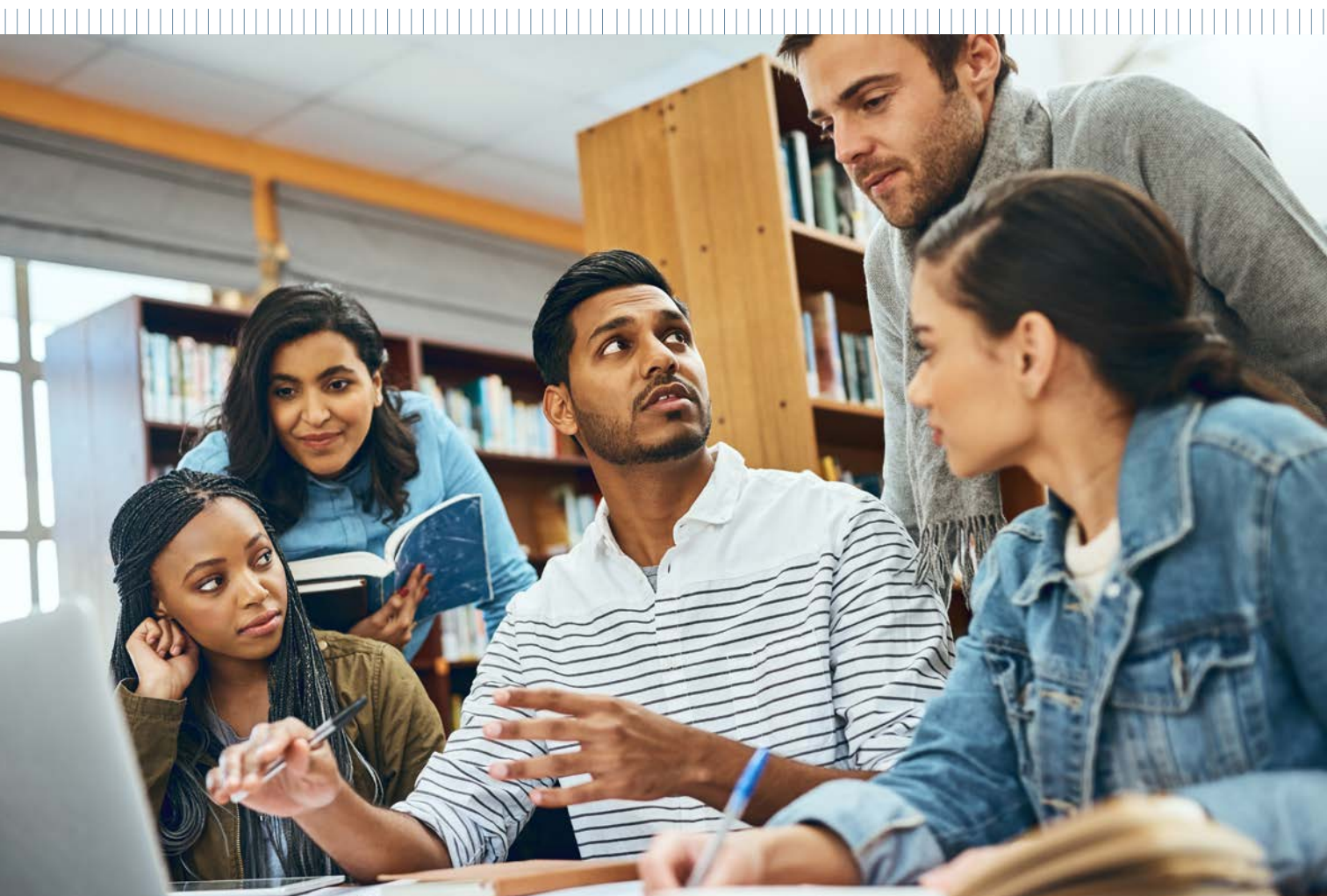




POLITECNICO
MILANO 1863

BACHELOR OF SCIENCE IN MANAGEMENT ENGINEERING



European Business Schools
Ranking 2020



POLITECNICO DI MILANO



Politecnico di Milano is one of the most outstanding universities in the world, **ranked 20th in the World, 7th in Europe, and 1st in Italy** according to **QS World University Ranking by Subject 2021 - Engineering & Technology**. Founded in 1863, it is the largest school of Architecture, Design and Engineering in Italy, with 2 main campuses located in Milan, heart of fashion and design industries, and 5 campuses based around the Lombardy region, one of the most industrialized areas of Europe. Many important scientists and architects studied and taught here; among them Achille Castiglioni, Gio Ponti, Renzo Piano and Aldo Rossi - both Pritzker Prize in 1990 and 1998 respectively - and Giulio Natta, who was awarded the Nobel Prize in Chemistry in 1963.

Politecnico di Milano is organized into 12 Departments, responsible for planning of the research strategies, and 4 Schools, responsible for the organization of education, 2 of them covering the fields of Engineering, 1 focused on Architecture, Urban Planning and Construction Engineering, and 1 School devoted to Design.

Thanks to a strong **internationalization policy**, several **study programmes are taught entirely in English**, attracting an ever-increasing number of talented international students, now forming a diverse community from more than 100 countries.

Inter and multidisciplinary approaches are fostered throughout the academic career, in particular at the PhD School and the ASP (Alta Scuola Politecnica), a school for young talents from all over the world, who develop their skills in a team work context to pursue complex innovation projects. **Teaching is closely related to research**, a key commitment that enables to achieve results of high international standards, while creating connections with the business world.

Strategic research is carried out mainly in the fields of energy, transport, planning, management, design, mathematics and natural and applied sciences, ICT, built environment, cultural heritage, with more than 250 laboratories, including a Wind Tunnel (unique in the world for configuration and features), a Crash Test Centre, PoliFAB (the University's lab for micro and nano production) and PoliFactory, a laboratory where new design processes are developed.



POLITECNICO DI MILANO SCHOOL OF MANAGEMENT

The School of Management was established formally in 2003 and it groups together MIP (the Graduate School of Business founded in 1979) and DIG (Department of Management, Economics and Industrial Engineering - Dipartimento di Ingegneria Gestionale), established in 1990, bringing together all research and education activities in the field of management.

The School of Management has three main features:



An essential focus on the themes of innovation, change and digital strategy to support and guide business



Inescapable attention is placed on the rational, scientific and quantitative approach. Typical of the engineering mindset



Continuous research with an interdisciplinary approach in research and teaching, thanks to our access to the skills and professionalism of the Politecnico di Milano ecosystem

OUR VALUES

The School of Management shares its founding values with its University

INTEGRITY

Faculty members, staff, students and our partners act in full respect of the law, rules and practices. Illegal and unethical behaviour must be rejected under all circumstances.

RESPECT

We expect Faculty members, staff, students and our partners to show full respect for other people's needs, the environment and society. Respect is a prerequisite for valuing and supporting an international environment in which diversities of gender, culture, beliefs, personalities, political ideas and backgrounds positively influence one another.

EXPERTISE

Research and education must both relate strongly to the economy and the corporate world in order to support an effective transfer of knowledge to the community.

ACCREDITATIONS & RANKINGS



Online MBA Ranking 2020
Executive Education Ranking 2020
European Business School Ranking 2020
Master in Management Ranking 2020



Gioia Ferrario

HR Director Italy, Greece & Turkey,
Boston Consulting Group

The experience at Politecnico helped me to develop strong competences both from a technical and from a managerial perspective. It gave me the tools to think strategically and deal with the changes that are taking place in the world.

I think this is very important for the new generations of engineers and it is one of the aspects I always search for when I interview new candidates. I feel this can make the difference in the current competitive context.

DEGREE IN MANAGEMENT ENGINEERING

The modern world has seen the development of complex systems, with a **strong interaction between technical, economic, and organisational aspects**, fostering the need for a new professional figure that stays at the intersection of these aspects and manages them in an innovative way. This role has been increasingly adopted by engineers who enriched their abilities with strong managerial competences, leading to the rise of a new breed of professionals: the **manager-engineers**.

Blending strong scientific knowledge and approach with deep managerial competence, Politecnico di Milano has been able to create a formal degree course to train this **emerging professional figure** that has evolved naturally throughout the industrialised world.

The Management Engineering Programme is structured in three-year bachelor's degree and a two-year Master of Science degree.

Management Engineers work in all types of industries and sectors and cover a wide-reaching range of activities, such as designing and managing production and logistics systems, strategic planning, business organisation and management, economics, planning and managing technology and innovation, internationalization processes, management control systems, corporate and market finance, economics and management of companies in regulated sectors and network services, large-scale project planning and management, internet applications and ICT management.



BACHELOR OF SCIENCE IN MANAGEMENT ENGINEERING

A SCIENTIFIC AND ENGINEERING BACKGROUND INTEGRATED WITH A WIDE KNOWLEDGE OF ECONOMICS AND MANAGEMENT

The **Bachelor of Science in Management Engineering** produces a professional figure with a solid background. The first year has a strong component of scientific disciplines and introduces some engineering and economic disciplines.

In the second year, modelling skills are studied in detail, digital engineering skills are provided and the business structure and its operational activities are analysed. In the third year, students can study an engineering discipline of their choice more in depth and deal with management, organizational and industrial dynamics, with special emphasis on data analysis. Moreover, an overview on the macroeconomic context is provided.

The educational programme ends with an internship in a company or a laboratory project, which allows students to apply the models and methods learned during the course to real contexts.

Subject to an evaluation of their curriculum, graduates in Management Engineering can continue their studies in the Master of Science in Management Engineering. Graduates may also choose other Master of Science programmes or 1st level Specialising Masters programmes.

ASSESSMENT CENTER

Third-year students have the possibility to assess their behavioural skills in the Assessment Center, managed by Politecnico di Milano Career Service and run by professional assessors.

By performing activities such as working groups on case studies and individual interviews, each student has the opportunity to learn more about his/her strengths and areas for improvement, such as decision making, problem solving, communication and leadership skills, and receive individual feedback.





KEY FACTS



FORMAT
3 years - full time



SELECTION PROCEDURE
by admission test with a limit on the maximum number of students



LANGUAGE
Italian



INTAKE
Yearly - September



ECTS
180



FOR FURTHER INFORMATION
www.som.polimi.it/en/course/bachelor/

SELECTION PROCESS

(average data related to the last three years, from 2018/19 to 2020/21)

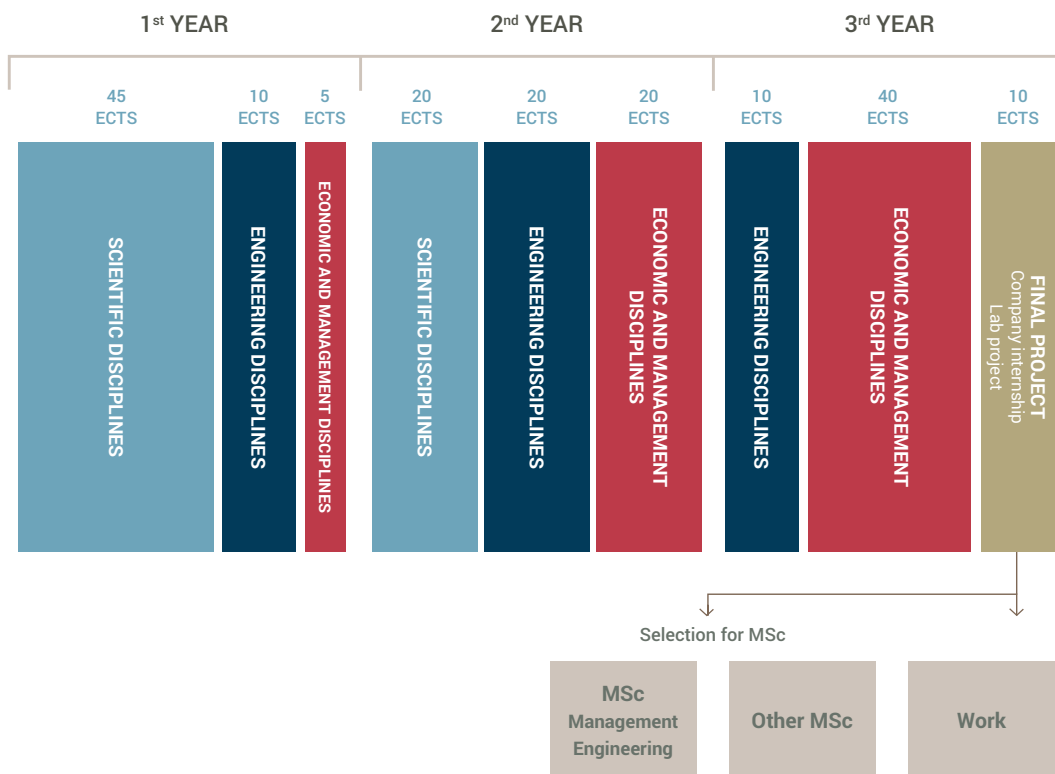


> 2500
STUDENT
APPLICATIONS

773
ENROLLED
STUDENTS



BACHELOR STRUCTURE



STUDENTS & ALUMNI EXPERIENCES

Giacomo Buratti

Bachelor



Jacopo Farina

*Master of Science,
Design Management,
Innovation and
Entrepreneurship*



Carlo Taddia

*Master of Science,
Supply Chain Management*



Valeria Tiberi

*Master of Science,
Finance*



Anna Bisogni

Bachelor



Michele Gerometta

*Master of Science,
Industrial Management*



Michele Capitanio

Bachelor



Alessandro Paravano

*Master of Science,
Design Management,
Innovation and
Entrepreneurship*



Marco Guerini

Bachelor



discover their
experiences here >



Luigi Binelli

*Operations Director,
Pikdare*

Fabio Dinale

*Senior Vice President Business
Development, Hitachi Zosen Inova*



Paola Scarpa

*Client Solutions,
Data & Insight,
Google*



Sergio Solero

*Vice President Sales and
Marketing BMW Group
Aftersales*



Roberta Regis

*Chief Information Officer,
Edenred*



Paolo Poma

*Chief Financial Officer
& Managing Director,
Automobili Lamborghini S.p.A.*



Tiziana Olivieri

*Industry Executive Director
Western Europe, Microsoft*



Alessandra Brambilla

*Worldwide Commercial
Solutions - EMEA Lead,
Microsoft*



Simona Pasero

*Head of Human Resources
& Organization,
Generali Investments*



Davide Di Domenico

*Partner and Managing Director,
BCG*

MOOCs

Online courses

POK (Polimi Open Knowledge) is the **MOOCs** portal (Massive Online Open Courses) providing online courses, free and open to everybody.

The main objective of the portal is to support the students, not only from Politecnico di Milano, in crucial stages of their educational and professional career: from high school to university, from bachelor's to master's degree, and from university to the workplace.

Courses are open to everybody: it is sufficient to register on the portal to access videos, content, activities and self-assessment tests.

Several MOOCs are **designed specifically for Management Engineering students**, both at the Bachelor and the Master of Science levels, and are available in English and Italian. Some of these include Fundamentals (Organization, Economics, Operations, Strategy, Financial and Management Accounting) from the series **Introduction to Management Engineering**, designed to introduce prospective master students and people interested in managerial disciplines to the key fundamentals of Management Engineering. Other courses are dedicated to Methodology (Survey Research, Case Study), etc.

The technology platform is a customization of **Open-EDX**, the open source platform released by EDX - the initiative resulting from a joint venture between MIT and Harvard.

Discover active MOOCs at: www.pok.polimi.it

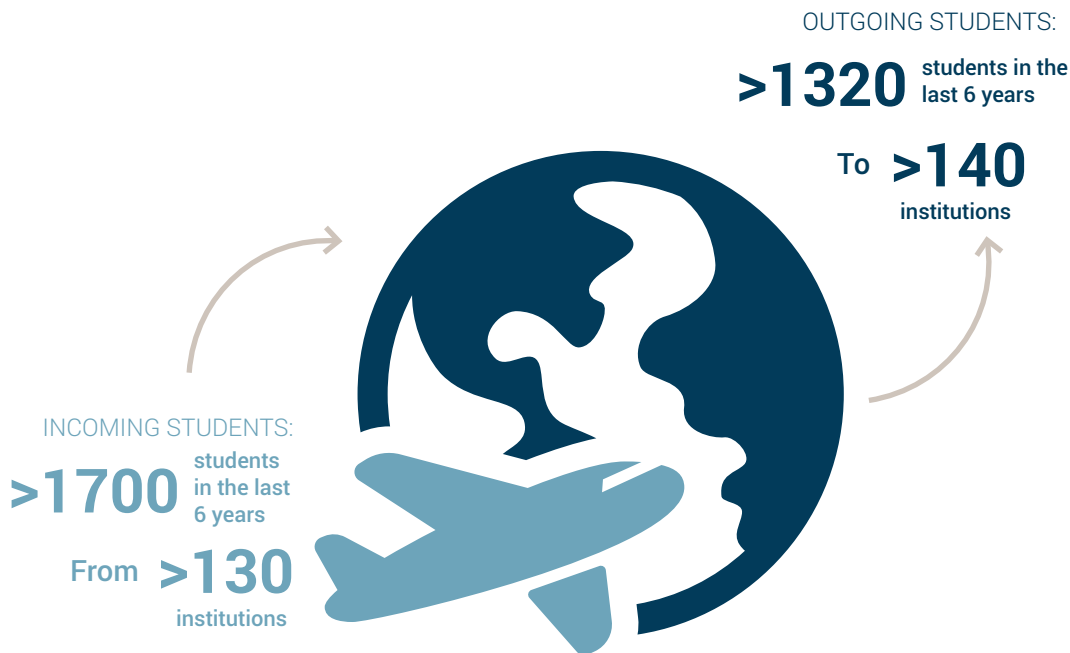


INTERNATIONALIZATION

A network
of over
200
partners

The Management Engineering Degrees at Politecnico di Milano offer many possibilities for international exchange and mobility experiences: the classic Erasmus programme, Double Degrees in collaboration with prestigious foreign universities, and special programmes with different durations, ranging from a few days to one year.

Exchanges with over 180 international institutions on all continents are available to students. Every year over 200 Management Engineering students go abroad, while we greet the same number of incoming exchange students on our campuses.



These numbers pertain to Management Engineering students only

INTERNATIONAL PROJECTS



> ALLIANCE4TECH

Alliance4Tech consists of four Top Engineering Institutions of different European cultures, located in global cities in the economic heart of Europe, forming a European Campus without borders for their students and faculties.



The Alliance4Tech Partner Universities (Politecnico di Milano, TU Berlin, University College London, CentraleSupélec Paris) will enhance and develop the following initiatives for their prospective and respective students:

- > **Free-mobility/Full flexibility** to switch from one city to another every semester, if there is former official approval of both the home and host Institutions
- > **Practical activities** and new pedagogical approaches
- > **Internship** opportunities in companies
- > **Seasonal Schools** in scientific fields and/or soft skills and employability and/or any fields of common interest
- > A multicultural and geographically **diverse environment** with students coming from within Europe and outside Europe alike

For more information www.alliance4tech.eu



> **IDEA LEAGUE**

The **IDEA League** is a focused network of leading European Universities of science and technology. Its members are TU Delft, RWTH Aachen, ETH Zurich, Chalmers University and Politecnico di Milano.

IDEA League

A focused network of leading European universities of science and technology

The IDEA League organizes Summer Schools, Doctoral Schools and tracks for highly talented students. Within the IDEA League network students, researchers and supporting staff collaborate to improve education, research and quality assurance.

For more information www.idealeague.org

> **QTEM**

QTEM Quantitative Techniques for Economics and Management is a prestigious international network that matches the best students with analytical and quantitative skills and a qualified network of academic and corporate partners.

Selected students can benefit from a tremendous chance of growth, enriching their cultural and academic background and taking the first step in the creation of a worldwide network.

QTEM Students are awarded a master's degree at their home university along with the QTEM degree.

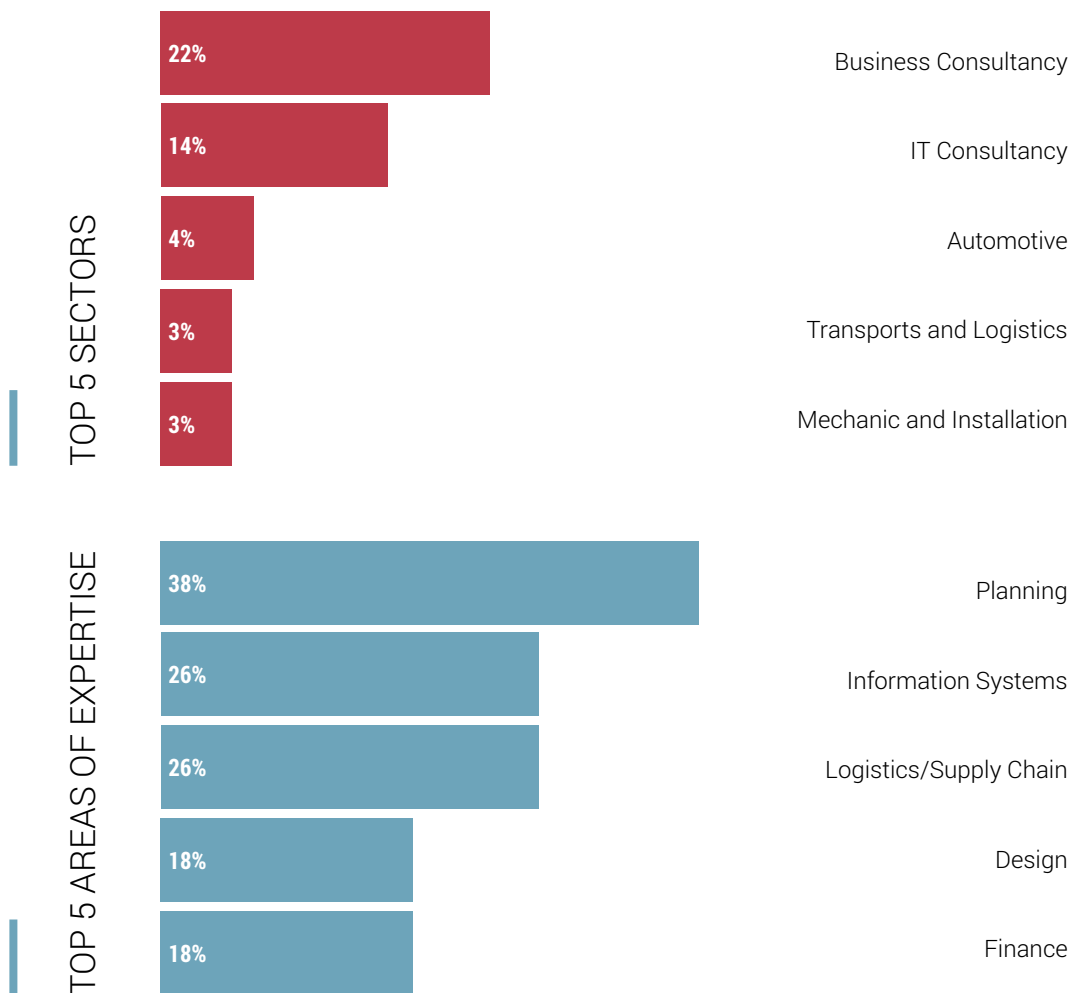


For more information www.qtem.org

PLACEMENT



Emphasizing the warm welcome given by the world of business to this new breed of professionals, graduates from Politecnico di Milano can find employment in several industrial and service companies, in consultancy firms, banks and financial institutions, the public administration and in non-profit organisations.



Source: Career Service Politecnico di Milano, Survey 2020



BACHELOR OF SCIENCE



employed

97%



when

83%

6 months

Source: Career Service Politecnico di Milano Survey 2020 - bachelor's degree. The survey is addressed to bachelor's degree graduates, a year from their graduation date.

MASTER OF SCIENCE



employed

97%



when

94%

6 months

Source: Career Service Politecnico di Milano Survey 2020 - master's degree. The survey is addressed to Msc Degree graduates, a year from their graduation date.

CONTACTS



ACADEMIC PROGRAMME OFFICE
management-engineering@polimi.it

www.som.polimi.it
www.poliorientami.polimi.it

HOW TO REACH OUR CAMPUS:

FROM CENTRALE FS METRO STATION

Take the M2 green underground (towards Assago Milanofiori Forum/Abbiategrasso), get off at Garibaldi Station (second stop), take the underground urban train (passante) S1 line (towards Saronno) or S2 line (towards Meda-Mariano Comense) or S13 line (towards Bovisa) and get off at the Milano Bovisa Politecnico station (second stop).

Estimated journey time: 15 minutes.

FROM CADORNA FNM METRO STOP

Take the S3 line (towards Saronno) or S4 line (towards Camnago Lentate) or R22 line (towards Varese) and get off at the Milano Bovisa Politecnico station (second stop).

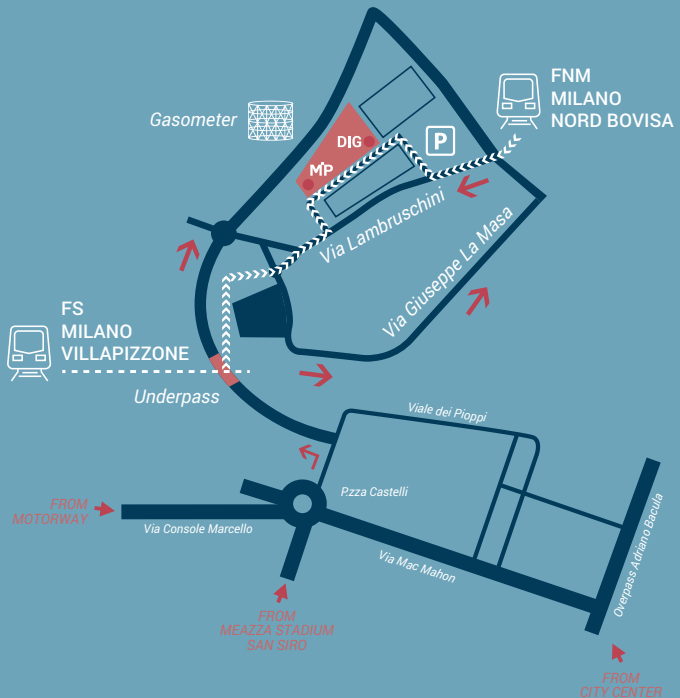
Estimated journey time: 8 minutes.

FROM DUOMO METRO STOP

Take the M1 red underground (towards Rho Fiera-Bisceglie), get off at Cadorna station (third stop), go into the train station and take the S3 line (towards Saronno) or S4 line (towards Camnago Lentate) or R22 line (towards Varese) and get off at the Milano Bovisa Politecnico station (second stop).

Estimated journey time: 15 minutes.

Alternative route: Take the M1 red underground (towards Sesto FS), get



off at Porta Venezia Station (third stop), take the underground urban train (passante) S1 line (towards Saronno) or S2 line (towards Meda-Mariano Comense) or S13 line (towards Bovisa) and get off at the Milano Bovisa Politecnico station (second stop).

Estimated journey time: 25 minutes.



POLITECNICO
MILANO 1863